

LOCAL ADS

Ladies & Gents Mountain Bikes - in very good condition, (including two very new safety helmets), £80 ono. Tel: 891727

Little Tike's Slide - Perfect for toddlers for climbing, crawling, sliding, easy storage and assembly, £15. Call Pete on 891778.

Jogger's/Off-Road Three Wheel Pushchair - M&S Schwinn design, Lightweight folding Alloy frame, safety features, suitable for children age 9 months to 4 years, £20. Call Pete on 891778.

Child's Bike Seat - Padded seat/back, adjustable foot stirrups, quick release design suitable for children up to 22kg, £5. Call Pete on 891778.

Electrolux ZCX6202 Cyclone XL Bagless Cylinder Vacuum Cleaner - Blue & White 2000w, £80. Call Pete on 891778.

Portable Air Conditioner (Homebase) - 9000 BTU/hour cooling capability, £75. Call Pete on 891778.

SPONSORSHIP

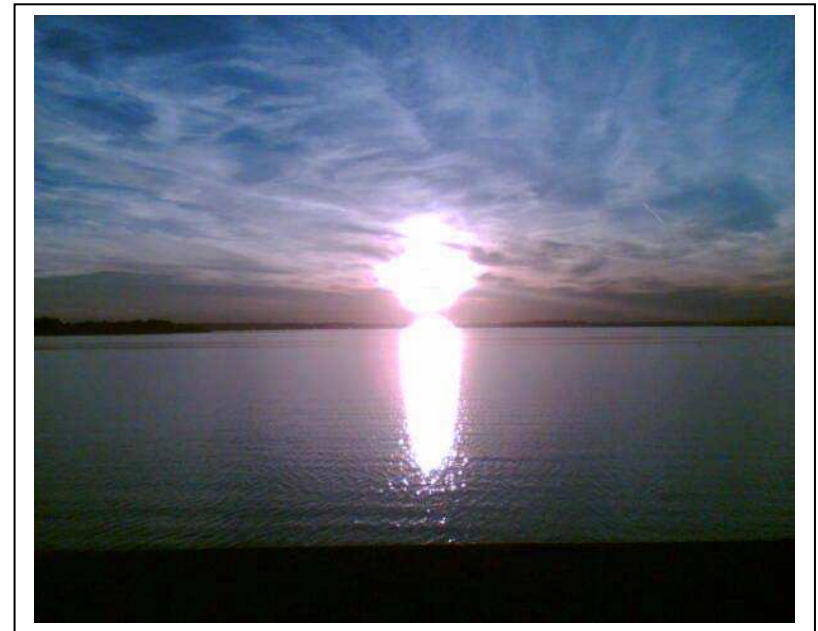
This months Spaldwick News is sponsored by Earthshine Solutions Ltd www.earthshinesolutions.com.

earthshine™

If you would like to know more about how your business or organisation could sponsor or advertise, please call Michael on 891920.

Spaldwick News

August 2008



August sunset over
Grafham Water

WELCOME

WELCOME TO THE AUGUST EDITION OF SPALDWICK NEWS

Apologies for the late arrival of Spaldwick News this month - this is mainly down to the pressure of work I'm afraid.

Well, if there is a theme this month, it seems to be community involvement; it is great to see even more engagement from people with ideas, news and things they want to share. This all helps generate more awareness and activity. It's all good stuff, so keep it coming. For those wanting to get more involved in the village, there is an opportunity to join the Spaldwick Social Events Group - look inside for more details.

Continuing with his regular feature on gardening, Roger Haines shares some of his successes and some of his challenges! I would encourage all the gardeners out there to share with his knowledge.

I must point out that Spaldwick News is completely apolitical. Although we have a small item on one political grouping within this edition, in the interest of political balance, I would offer the same opportunity for other organisations wishing to communicate anything of benefit to the wider community.

This month's cover picture comes courtesy of my very "low-tec" mobile phone, taken whilst hiking around Grafham Water. If there are any budding photographers out there, please feel free to e-mail me your seasonal photos and we would be delighted to see these published on the front page each month.

As ever, thank you for all the contributions this month. Please send your latest ideas & thoughts to mtownsend@earthshinesolutions.com, or drop them in directly to me at 16 High Street, or just call me on 891920.

Michael.

DIARY DATES

BLUES AT THE GEORGE

Following last year's thoroughly enjoyable "Blues Afternoon", the 21st Century Blues Brothers are back at The George by popular demand on Sunday 17th August, starting at 2.30pm. A BBQ or Hog Roast will also be served in the Garden to accompany the event. Please visit their web site www.georgeofspaldwick.co.uk for details of upcoming events.

SPALDWICK SOCIAL EVENTS GROUP - NOTICE OF MEETING

The Spaldwick Social Events Group will be holding its next meeting on Thursday 11th September 2008, at 7 Fuller Close. This will be an important meeting, as there will be an opportunity for new members to join the Group and help shape future events within the village.

Several members of the Group will be stepping down from their positions, including the Chairman, Jean Haines, and the Treasurer, Rosemary Balchin. We would like to thank them and all the departing members for their hard work and support over the last few years in organising some successful events and raising funds for the village.

Please e-mail Alexandra Baker on simonandalexbaker@btinternet.com, if you would like to attend the next meeting. Alternatively, please drop a note to Alexandra at 7 Fuller Close.

ST JAMES' CHURCH SERVICES AUGUST 2008

3 rd Aug	8.00 am	Eucharist
10 th Aug	9.30 am	Eucharist
17 th Aug	6.00 pm	Evening Prayer
24 th Aug	9.30 am	Children's Eucharist
31 st Aug	11.00 am	Group Service at Barham (including bell re-dedication)

There is usually a service at 9.00am Tuesday to Friday.

For more information about the church - services, activities, baptism, weddings, Holy Communion, ministry to the sick or funeral services contact one of the clergy or churchwardens:

Father Jonathan Young (Rector)	01480891695
Father Martin Kettle (Curate)	01480890284
Rosemary Good (Churchwarden)	01480890287
John Blatch (Churchwarden)	

PARISH COUNCIL

The next Parish Council meeting is scheduled for Thursday 4th September 8 pm, in the Community Room at Spaldwick School, although details should be checked with the information displayed on the notice boards a few days before the meeting.

All members of the public are invited to attend. For copies of the latest minutes, please feel free to refer to

<http://eoe.xarg.co.uk/spaldwick/>

SPALDWICK PARISH PLAN



The Spaldwick Parish Plan Steering Group wishes to thank all those who completed and returned the Questionnaire. They are to be congratulated on their magnificent response, which was in the order of 80% and surpassed that of most other parishes engaged in developing their Parish plans. The prize winners were as follows:

Flight over Spaldwick - Ticket No 32, High Street, Spaldwick - Claimed.

£30 Voucher for the George Pub - Ticket No 66, Pound Close - Claimed.

Treatment Voucher for Calmer Beauty - Ticket No 131, Burton Way - Claimed.

Youth Draw - Ticket No 8, Ivy Way - Claimed.

The Steering Group is now engaged in analysing the results and preparing the action plan, which it aims to have drafted for consideration at a Parish meeting in mid -October.

ALL THAT AND THE PRICE OF OIL!

We've all seen how volatile energy prices have been during the last year. Even though the price of oil has recently dropped back slightly, most commentators agree the long-term trend is likely to be upwards. One can't help but reflect on the need to reduce our demand for energy and to become more efficient with what we use. Although we are enjoying a reasonable summer, autumn is only just around the corner and it may be time to start thinking ahead to find ways of reducing our energy bills.

10 Ways to Save Energy (& Money):

1. Turn the thermostat down by 1°C
2. Check your water cylinder is set at 60°C/140°F
3. Close your curtains at dusk
4. Always turn the lights off when you leave the room
5. Don't leave appliances on standby
6. Only boil as much water as you need in your kettle
7. Fix leaking taps
8. Use energy saving light bulbs
9. Do a home energy check

For more information - refer to www.energysavingtrust.org.uk

Spaldwick Oil Buying Group?

In the future it may be worth considering the use of renewable energies (wind, solar, heat pumps and so on) as an alternative to oil. This requires some careful planning, especially with older buildings (more in future editions). In the short-term, it may be an idea to consider establishing a Spaldwick Oil Buying Group. I have put a "toe in the water" with a few companies to establish the likely level of discount we could attract, for various numbers of households in our village. It is unlikely that we could impact much on the oil commodity price alone, although through our combined bulk order we could reduce the transport & delivery cost. If anyone is potentially interested in this, please give Michael a call on 891920.

TRANSPORT

Use of Bus Passes on Early Service to Huntingdon

Following several months of lobbying from parishes in West Huntingdonshire, which include Keyston, Catworth, Molesworth, Brington, Old Weston, Leighton Bromswold, Ellington, Grafham, Perry, Staughton Green, Kimbolton, Stow Longa and Spaldwick, it has been agreed that people holding bus passes in these villages and using the daily 400 and 401 bus services, will now be able to use their passes on these routes into Huntingdon before 09.30 Monday to Friday.

Locally this means that with effect from 4 August 2008 Concessionary Bus Pass holders can travel free Monday to Saturday on the 401 Service to Huntingdon departing Grafham at 07.50, Stow Longa at 08.11 and Spaldwick at 08.15. (Saturday was already free)

DONATION FOR EAST ANGLIA'S CHILDREN'S HOSPICES (EACH)

We have been passed a copy of a letter from East Anglia's Children's Hospices (EACH), in which they declare "a huge thank you for the fantastic donation of £1,098.98" from the Spaldwick Open Gardens Committee. This will enable them to continue providing their vital range of services to support young people with life-threatening conditions and their families in the hospices, in the family home and other settings.

Anyone wishing to know more about the works of EACH may call them on 01223-205181. Well done to all those who took part in and supported the Open Garden's Day in raising this important donation.

SPALDWICK NEIGHBOURHOOD WATCH

Useful Numbers

A reminder of some useful telephone numbers:

Report any suspicious activity to the Police on - 0845 4564564 or Crimestoppers - 0800 555111.

Neighbourhood watch information is available at www.cambs.police.uk

The Huntingdonshire Community Safety Partnership (HCSP)

HCSP is currently undergoing its second Strategic Assessment to identify what issues of crime, disorder or anti-social behaviour have occurred over the last 12 months within Huntingdonshire. This Assessment will help form the review of the Community Safety Plan and enable the Partnership to identify priorities for the period April 2009 - March 2010.

It is important that the Assessment reflects the views and experiences of those living within the District and therefore residents are being given the opportunity to express any concerns that they may have about crime, disorder or anti-social behaviour by completing a questionnaire at

<http://www.snapsurveys.com/communitysafetysurvey/>

Alternatively, paper versions of the questionnaire are available from Mr David Stowell at 23A Thrapston Road. Phone 890065.

The deadline for completing the questionnaires is Friday 12th September 2008.

CLUBS & SOCIETIES

CONSERVATIVE PARTY



In May 2009 the County Council Elections will take

place in the constituency of Huntingdon. In order to be prepared for this, we are looking for like minded people within Spaldwick and the surrounding villages of Easton, Ellington, Stow Longa and Barham, to get involved with the preparation of the run up to the election. The group would meet monthly to plan and organise any fund raising events and leaflet distribution. If you are interested in helping the Conservative Party in Spaldwick and the above areas, please get in touch with Tom Shuker on 01 480 891727 or e-mail tom.shuker@btopenworld.com or check out the new Conservative Party.Com, web site for updated news around the region. Should a general election be called, there will be some changes to the constituency boundary, which will affect Spaldwick, Easton, Ellington, Stow Longa and Barham. These villages currently resided in the Huntingdon constituency. The Member of Parliament for Huntingdon is Jonathan Djanogly MP. When the boundary changes, Spaldwick and the above villages will reside in the North West Cambridgeshire constituency, and the current Member of Parliament for North West Cambridgeshire is, Shailesh Vara MP, Shadow Deputy Leader of the House of Commons.

August Waste Bin Collection Dates

1st Blue, 5th Grey, 12th Green,
15th Blue, 19th Grey, 27th Green.

GARDENING TIPS

"When I did it I didn't know the problem I was creating!"

By Roger Haines

The garden at 1 Ivy Way was created over ten years ago when the house was built and the landscapers decided to plant a *Cotinus Coggygria* 'Purple', a *Rhus Typhina* and a *Berberis Darwinii* all within three feet of each other. The *Berberis* is now 8 feet high and very woody but had provided me with some very nice seedlings. I, therefore, decided to dig it out in February.

Since we have lived here I have cut back the *Cotinus* every year to the main stem, which provides us with a wonderful lollipop of dark reddish purple foliage. I then turned my attention to the *Rhus* which is now 10 feet high, 15 feet across at the head and shading out the plants underneath; so I decided to cut all the branches hard back to 2 feet from the main stem. That was my mistake!! The tree must have felt it was under threat and consequently produced 30 or so suckers, some of which came up 15 feet away from the main stem. So, after careful consideration I am going to remove this tree as it was always too big for the space it had been originally allocated.

We have now harvested the container grown potatoes and as a first try, I was not impressed by the number of spuds produced. I planted them as instructed with a layer of good compost and kept topping up the container as the potatoes sprouted above the compost. They grew very well, making plenty of strong arms and after they had duly flowered and turned yellow we harvested our crop. I kept them well watered and do not know why the harvest was small but, nonetheless, very tasty. Does anyone have any idea what I did wrong?

The runner beans have reached the top of the canes and are full of flower with plenty of beans set so I am keeping them well watered.

I have noticed this week that Blackfly has made an appearance on my Dahlias so have given them a quick spray which hopefully will do the trick.

I have only a limited space for veg growing at the moment so I was delighted to get such a good response regarding the possibility of an allotment society in the village. The names of those nine people who have expressed an interest have been passed to the Parish Council and at the last Council Meeting our request was discussed. So watch this space, as I am very hopeful that a piece of ground will be found for us.

I've also been advised that The National Lottery does give grants to folk starting up allotments, so I will approach them once we know what is happening with the provision of a suitable site.

Anyone who wants to add their name to the allotment list, please feel free to give me a ring on 891683.

I will also try and answer any gardening questions you may have so feel free to get in touch. E-mail me on roger@jeanhaines.plus.com.

Roger