

**Dates for your diary:**

- St James Church Sunday Services for June - 5th and 19th, 9.30am.
  - Cream Teas - Sunday 19th June.
  - Pimms & Strawberries in the garden - Friday 29th July, from 7pm.
  - BBQ - Friday 19th August, 7-9pm. The Lodge, Upthorpe Farm – bring your own bottle!
- More details about the above events and services can be found on page 2.

June 2022

To advertise or contribute news: [spaldwicknews@gmail.com](mailto:spaldwicknews@gmail.com)



# SPALDWICK NEWS

## Spaldwick School's Maths Whizz



Spaldwick Primary School pupil Felix has come 1st in the UK and 6th in the world, in a World Maths Day "Mathletics" challenge.

Headteacher Louise Worrell said: "More than 5,000,000 children in over 14,000 schools use Mathletics, so we were extremely proud to hear that the Year 6 pupil had been recognised."

He is an outstanding mathematician and we are all extremely proud of his amazing achievement."

## Singing for Spaldwick

This term, Spaldwick Primary School had the opportunity to visit the Resorts World Arena in Birmingham to perform in the Young Voices choir.



Mrs Worrell said: "Nothing can prepare you for the sound of 6,000 children singing together! It makes for one of the most exciting and memorable musical experiences you can imagine, and our children loved every minute!"

# Where the early bird yoga goes and the late rising latté lovers find Common Ground

The 'Common Ground' in Spaldwick has had it's busiest month on record with art classes, a movie night, a jazz concert and 2 birthday parties being held alongside the weekly toddler group, yoga and singing classes. Jenny Jones who recently moved to Spaldwick said "we've met lots of new people through the events at the CG, everyone has been so welcoming and it's great to be part of such an lively village community".

Although this headline is a few years down the track, we wanted to tell you about a village led project which is underway to repurpose part of St. James' Church in to a new community space.



The 'Common Ground' project aims to revive the role St. James' plays in the village, extending it beyond traditional religious and spiritual uses, to become a place for everyone in Spaldwick to enjoy, at the heart of our Community. We are currently gathering ideas from the village as to how we want to develop the space and will be holding community meetings as well as knocking on a few doors over the coming months to see what you think. If you're interested in learning more about the project please contact Guy Player or Elaine Woolward at: [hello@spaldwickcommonground.co.uk](mailto:hello@spaldwickcommonground.co.uk)



- We are very lucky to have such an amazing garden for the children to use. This does, however, mean that we need help to keep it tidy in the warmer months.

Can you spare just one morning/afternoon on a weekend/evening between now and October to come and cut the grass and do some weeding for us?

Email [playtimesoffice@gmail.com](mailto:playtimesoffice@gmail.com) to offer help - or call 01480 890077.

- The children at Playtimes have some sad but also very exciting news to share. Our wonderful Gemma B and two sons Owen and Niall are leaving, as they are moving to Cyprus! They will be greatly missed by all. We are sure you will join us in wishing them all the happiness in their next exciting adventure in Cyprus.

Watch this space for our next exciting fundraising event!

## Spaldwick Carpet Bowls Club - by Andrew Vickers

In May, the club played their first friendly since the Autumn of 2019. 9 members made the short trip to Alconbury. Everyone enjoyed this fun, friendly and competitive evening.

6 matches were played with the fortunes of both sides constantly changing. After the first 4 matches, Spaldwick held a slim 4-shot lead. The final 2 matches of the evening took place after the interval, with Spaldwick winning both - only losing 2 of the 6 played and increasing their lead to 10 shots, resulting in a 32-22 victory.

The club's next friendly is in Bedfordshire against the county's former league champions Renhold, before welcoming Riseley to the Mandeville Hall for the first home match of the year.

For more details about the club, please contact Andrew on 01480 891201.

You may have noticed some pebbles painted yellow (the colour of friendship) with a blank hand (representing helpfulness). These were placed around the whole village in recognition of the support and help we gave one another through the Covid pandemic. We gave thanks for this at our service on Sunday 1st May remembering:

- Spaldwick pop up shop
- Vegetable box deliveries
- Egg deliveries
- Shopping for each other
- Errands ran
- Pets taken to vets
- Prescriptions collected
- Cheques cashed
- Competitive NHS clapping in the street
- Distanced chats

We'd also like to thank the generous donations to the food bank collection on 1st May.

**Flowers:** We stopped having flowers in church during Covid, but now we are very happy for you to donate a bunch of flowers in memory of a loved one or to celebrate a special occasion. Get in touch with Julia: 2 High Street - or calling 01480 890203 with your preferred dates.

**Jimmy's breakfast club:** Why not join us for a social Sunday morning? Stroll along to St James to start your Sunday with a bacon butty or Croissant and hot brew, with the chance to catch up with fellow villagers. There will be no Jimmy's on 5th June, the next Jimmy's is 3rd July. But, do join us at 11.30am for coffee and cake after the service on 29th May.

**Summer community events for your diary:** We have a number of events coming up. If you can join us, please try to let us know so that we have some idea of numbers, but if not, do feel free to just turn up as we'd be delighted to see you:

- Cream Teas Sunday: 19th June – RSVP to Amba (01480 890565) or just turn up.
- Pimms & Strawberries in the garden: from 7pm, Friday 29th July at 2 High Street - RSVP to Julia (01480 890203), or just turn up.
- BBQ: 7-9pm, Friday 19th August at The Lodge, Upthorpe Farm – bring your own bottle!

**Services for May and June:**

Sunday 29th May - 10.45am  
Sunday 5th June - 9.30am  
Sunday 19th June - 9.30am

**Do you have keyboard skills?**

The church organ is not being used very often at the moment, but we'd love it to be used again.

If anyone has any keyboard skills and would like to come along to play the organ we'd love to hear from them.

We are not looking for anyone to play at services etc. unless they'd like to, but more to enjoy this historic organ.

# Greg Hall Electrical

Fully qualified local electrician, No job to small,  
Full apprenticeship served (not just someone who has done a college course), Over 25 years of experience,  
Honest and reliable service,  
All electrical installations undertaken, work certified and certificated when required.

Rosecroft, Perry, Huntingdon Tel: 01480 812878  
Mobile: 07989 472235  
Email: GregHall1972@gmail.com



## Windows, Doors, Conservatories and Garage/Loft Conversions

Get uPVC double glazing at a local price

5 Windows fitted from £1650  
Composite doors from £895  
Roofline £49 per metre with free guttering

Call mobile **07801 454535**  
or office **01480 457574**  
Email: **rob\_clarke@apple-windows.co.uk**  
**www.apple-windows.co.uk**

**Brochures**  
Short & long runs

**10% OFF YOUR FIRST ORDER**  
Quote SN19

**Order of Service**  
Bespoke Designs

**Business Cards**  
A range of finishes available

**NCR Pads**  
A range of sizes available

**Leaflets**  
In-house design available

**Stationery**  
Letterhead & Comp Slips

**Roller Banners**

**One-stop shop, for all your print requirements**  
**Your trusted print partner**  
Warwick Printing Company Ltd  
Caswell Road, Leamington Spa, Warwickshire CV31 1QD  
[www.warwickprinting.co.uk](http://www.warwickprinting.co.uk)



**WIN**  
1 OF 5  
**£100**  
**B&Q**  
**Gift**  
**Cards**

**SUPPORT US**  
**Through Thick & Thin**

- Please help give our fundraising a much-needed boost
- Tickets cost just £1 a week
- Cash prize winner EVERY week
- Win up to £25,000!

To support your school, go to:  
**yourschoollottery.co.uk/play**  
and search for: **Spaldwick Community**

Supporters must be 16 years of age or older. Offer ends 25<sup>th</sup> June 2022. Terms and conditions apply (see website for details).

## Spaldwick Neighbourhood Watch - by David Henrick

### Fake energy bill rebate scheme

It has not taken long for scammers to jump on the back of soaring energy bills. Emails using the logo of energy regulator Ofgem claim to offer an 'energy bill rebate scheme' worth up to £450 per household. This links direct recipients to a fake online portal where victims are urged to share personal and payment details in order to claim their refund.



### Santander impersonation text scam exposed

Most of us receive dodgy texts, but it's always worth knowing the latest one doing the rounds.

This scam begins with what appears to be a warning text from Santander about so-called suspicious activity on your account. The warning is then meant to lure you into clicking a URL to notify Santander if it wasn't you.

### Bombarded by phoney 'market research' calls

A member of the public has told us they've been receiving at least one call a week from a 'market research' company requesting personal data. The aim in this initial call is to gather enough information about you to attempt further scam calls. It's likely these would take the form of a fake alert 'from your internet service provider', claiming you have a virus on your computer or a problem with your broadband.

## Ellington WI - by Sue Rice

Ellington WI usually meets on the first Tuesday of the month, at 7.30pm in the Village Hall.

Visitors are very welcome to see what we're up to and are encouraged to become a WI member if they like what they see. Membership is £44 or pro-rata through the year.

If you are interested please contact the President, Ann Bentley at: [nigel.bentley@btinternet.com](mailto:nigel.bentley@btinternet.com) or the Secretary, Sue Rice at [normanrice@btinternet.com](mailto:normanrice@btinternet.com)

# PREFERRED

## GROUP

Plumbing, heating and building services for both domestic and commercial properties.

# 01480 774 723

[www.preferredplumbingandheatingltd.co.uk](http://www.preferredplumbingandheatingltd.co.uk)

[preferredplumbingandheatingltd@gmail.com](mailto:preferredplumbingandheatingltd@gmail.com) | [@preferredplumbingandheatingltd](https://www.instagram.com/preferredplumbingandheatingltd)



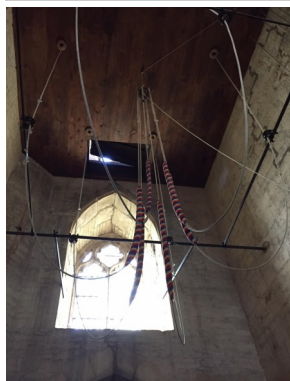
Preferred Group is a subsidiary of Preferred Plumbing and Heating Ltd.

Unit 25 Levellers Lane, St Neots, PE19 2JL

## Spaldwick Waste Bin Collections for June/July 2022:

Grey		7th June	21st June	5th July	19th July
Blue		14th June	28th June	12th July	26th July
Green	2nd June	16th June	30th June	14th July	28th July

### Spaldwick Bells - by Elaine Woolward



On Sunday June 26th, there will be a Peal Attempt by visiting ringers at Spaldwick.

This is the first peal attempt after a 20 year gap, the last being in 2002. A peal is a 3 hour long ringing marathon. It will start about 2pm and if successful, finish at 5pm.

They will probably keep the doors closed, so there are no distractions and can concentrate fully without

disturbance. Many a peal is lost after 2 hours and 45 minutes with only 10 minutes to go.

Also with summer approaching and longer evenings, Spaldwick Bells are looking to recruit some new ringers. So if you are Year 6-66 and want to learn or get back into ringing, I know there's a few of you out there, please get in touch: [spaldwickbells@gmail.com](mailto:spaldwickbells@gmail.com) and find out more about our learners practices.

## Discover more about Ringing ...



BELL RING

for mor  
is abc  
whe  
And a

Would YOU

An experienced ringer v...  
and there's no obligation to continue.



**Year 6 to 66**  
Come along and learn to ring  
4 bells were cast in 1635 (Reign of King Charles I)  
And 2 in 1921  
They weigh from Treble 6cwt 2qtr - Tenor 12cwt 2qtr  
Treble 315kg - Tenor 620kg Try lifting that at the Gym!!  
Email: [spaldwickbells@gmail.com](mailto:spaldwickbells@gmail.com)



Discover our Edwardian police cells

## Visit St Neots Museum

- Friendly local museum
- Discover the story of the town & who was St Neot?
- Hands-on gallery activities for children
- Edwardian police cell
- Museum craft & gift shop
- Evening town walks
- Family activities in the school holidays



8 New Street, St Neots, PE19 1AE / 01480 214163

Open: Tuesday to Saturday, 11.00am - 4.00pm

[www.stneotsmuseum.org.uk](http://www.stneotsmuseum.org.uk)

Follow us



@stneotsmuseum

## Let us transform the quality of your lawn!



**Aeration  
Scarification  
Overseeding  
& More**



- ✓ Greens up and thickens the lawn
- ✓ Removes weeds & minimises moss
- ✓ Completely safe for children & pets
- ✓ Locally owned & operated business
- ✓ Regular personalised treatments
- ✓ No contract - Direct Debit available



**Greensleeves**  
Lawn Treatment Experts

**FREE Lawn Analysis: 01767 651 639**

[www.greensleeves-uk.com](http://www.greensleeves-uk.com) • Email: [hunts@greensleeves-uk.com](mailto:hunts@greensleeves-uk.com)

We are hugely grateful to all sponsors for making the printing of this month's newsletter possible - please mention 'Spaldwick News' when replying to their adverts, as we receive no other funding! If you would like more information about advertising, please email: [spaldwicknews@gmail.com](mailto:spaldwicknews@gmail.com)

Whilst every care is taken in the printing of editorial and sponsorships, Spaldwick News accepts no responsibility for any inaccuracies or consequences which may arise from them. Advertisements are not a recommendation of services.