

SPALDWICK NEIGHBOURHOOD WATCH

INCREASED RISK OF BURGLARY

There is an increased risk of burglary to dwellings due to insecure doors and windows.

Please consider the following advice to reduce the risk of becoming a victim:

Close and lock all doors and windows even if you are at home, remove the keys but ensure easy access - should they be required in an emergency

Use a door chain or bar before committing to answering your door

Where possible deny access to the rear of your property

Consider fitting security lighting

Put all desirable, expensive or sentimental items out of sight

If you are going away - make sure someone is aware and can keep an eye on your property

Consider the use of table lamps with timers - to give the impression that your house is occupied

We are a part of the Cambridgeshire Neighbourhood Watch Community for more information see:

<http://www.cambsnhw.org.uk/>

REMEMBER to dial **101** for all non-emergency calls.

David Henrick 01480896556 david.consult@btinternet.com

June Waste Bin Collection Dates

Blue/Green	Grey
Sat 1st	Fri 7th
Fri 14th	Fri 21st
Fri 28th	July Fri 5th

SPALDWICK NEWS June 2013



Spaldwick Queen 2012

Olivia Sturdy

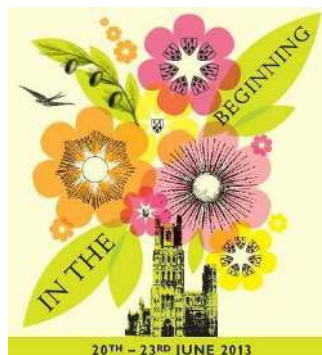
See page 6 to enter for this year's Queen

100 Club Winners in May

The May winners were £40 No.57 Amba Harbour, High Street and £20 No.71 Libby Henrick, Burton Way

Ely Cathedral Flower Festival

Thursday 20 June - Sunday 23 June
Thursday to Saturday - 10am-5pm; Sunday 12pm-4pm



With the theme 'In the Beginning', over 40,000 heads of flowers will transform the Cathedral's interior into a stunning spectacle depicting The Creation. Over 80 floral exhibits will represent the planets, sea, sun, moon and creatures of the world. One of the highlights will be a 115ft river of water down the length of the Cathedral's impressive nave.

Other attractions at the event include Music Recitals, Gardening Q&A, Floral Experts, Lunches and Refreshments, including Cream Teas in the Bishop's Garden, and a Gift & Craft Marquee.

Adults £10 (under 16s free) Groups 20+ £8

Tickets can be booked online from the Cathedral website www.elycathedral.org or 01353 660310 or 660349 or email flowers@cathedral.ely.anglican.org

There are many other churches planning Flower Festivals this summer.

See www.ely.anglican/news/events

PARISH COUNCIL

Chairman: Bernard Plummer, 41 High Street, Spaldwick PE28 OTD
Clerk: David Stowell, 23A Thrapston Road, Spaldwick PE28 OTA
Phone: 890065 email: davidstowell@onetel.com

The next meeting of the Parish Council will be held at Spaldwick School on Thursday 27th June at 8 pm. Please note that this is a week later than originally scheduled.

Members of the public are welcome to attend and may address the meeting on relevant matters during the Open Forum.

DOGS ON LEADS

Dog owners are reminded that they must comply with The Dogs on Leads (Huntingdonshire) Order 2007 which includes Spaldwick and in particular requires dogs to be kept on leads on all roads and adjoining footpaths and verges within the 30 mph zone. Offenders are liable to 'on the spot' fines of £75 by District Council Officers or, on summary conviction, to a fine of up to £1000. To avoid these measures being taken please keep your dog on a lead where you are required to do so.

Help and support with day-to-day living

AskSARA has proved popular with local people since a Cambridgeshire version launched last year. So far it has helped nearly 4,000 people across the county access advice and information about the equipment and support available locally to help them remain independent and in their own homes. In addition to maintaining the garden and outdoors, a wide range of topics are covered from managing medication and eating healthily to equipment to aid hearing, personal care and household chores.

This year June 17th - 21st is falls awareness week. AskSARA can also help you to find equipment to help prevent falls at home and when you are out and about. See www.cambridgeshire.gov.uk/asksara or visit the Huntingdon Library

Spaldwick Church

June Services

2nd No Service Sunday Worship at Easton at
9.30am, Eucharist at Barham 11.00am

9th 9.30am Eucharist

16th 6.00pm Evensong

23rd 9.30am Eucharist

30th 11.00am Group Eucharist at Barham

Jonathan Young (Rector) 01480 891695

Rosemary Good (Churchwarden) 01480 890287

John Blatch (Churchwarden) 01480 890853

Will you help Mike and Pauline Robinson, Thrapston Road?

Mae, who is our great niece, was born with spastic quadri-plegic cerebral palsy in May 2009. We are raising funds to send Mae to America for a life changing operation which will help her achieve her dream of being able to walk.

We need to raise £70,000.

Please help with any spare change in the tub on the bar at The George or if you would like to donate please visit Mae's website - www.justgiving.com/hope4mae/ or TEXT MAEF70 £amount to 70070



Our Escape sessions in May were very busy with more than 50 young people attending on both nights. The good weather allowed us to open up the school grounds in addition to craft activities supplied by our new youth worker Tony Evans and the usual computer games, board games and table tennis.

Forthcoming youth club dates

This month's sessions are as follows:

June 7 – 7-9pm

June 21 – 7-9pm

Look out for the Escape stall at the Ellington Gala on 29 June and at the Spaldwick Fete on 13 July and support us if you can!

Please watch the Spaldwick website at <http://www.spaldwick.com/escape> for regular news! If we are forced to cancel any sessions at short notice, we will post it on the Spaldwick website.

Spaldwick Gardening Club

At last the weather was kind to us when we visited Lucy Boston's Garden at Hemingford Grey on Saturday 25 May. What a beautiful spot and a most interesting house, one of the oldest occupied houses in the UK. Diana Boston gave us a guided tour and showed us the amazing quilts that her mother-in-law, Lucy Boston, had created during her lifetime.

The club has decided that we will have a coffee morning, plant sale and raffle in October in the church as we did last year. This was a very successful fund-raiser and seemed very popular. Date and time to be finalised.

The Garden Club will be supporting the village fete with a plant stall and raffle. If you are able to donate any plants or raffle prizes then please bring them to our stall on the day.

Our activity for our May meeting was the construction of a planted alpine garden in a terracotta container.

Our June meeting, on Wednesday 12 June at 7.30pm, will be a visit to Stewart Barnard's garden which we are greatly looking forward to. Any non-garden club members are also welcome to come along; we will be asking for a £2.50 per person donation which will go to Stewart's charity. Please bring your own refreshments.

Roger Haines

The next OPEN HOUSE will be : Monday 24th June 1.30pm -3.30pm, hosted by Liz McCue 10, Ivy Close

DATES FOR YOUR DIARY

Open House
June 22nd Bingo
June 24th Open House
June 30th Scarecrow Week
July 13th Village Fete

For items in the News email john@blatch.com

For items on the website email mark.heath@spaldwick.com



**RECYCLE YOUR OLD CLOTHES,
BOOKS AND DVD'S TO HELP RAISE
FUNDS FOR SPALDWICKSCHOOL**

The next collection is:

Wednesday 5th June at 9:00am

Please help us to raise funds for school. Ask family and friends too.

As usual we would ask that you use your own bags.

WHAT WE CAN TAKE:

Clothes, paired shoes, handbags, blankets, sheets, curtains, soft toys or books and DVDs (in separate box / strong bag)

Please take your donations to school on the morning of 5th June.

If you are not able to do this but would still like to donate please deliver your bagged/boxed items to Keren Pope at 11 Ivy Way before the 4th June.

If you are unable to deliver your donations please contact Claire on (01480) 896210 before the 4th June to arrange collection.

Thank you for all your support

BINGO EVENING

Saturday 22nd June 5.30pm-7.30pm
Spaldwick School Hall

Try your luck at our community event for all -
from the youngest to the eldest!

Ticket includes:

- ◇ Tea/Coffee/Squash Sandwiches and Cakes,
- ◇ First two rounds free

Subsequent games 50p.

- ◇ Prizes for first row and complete card
(Children and Adults)

Tickets from Amba 890565/ Stuart 891837/
Edie 890991/John 890853/ Rosemary 890287

Family(2+2) £10 Adult £4 Child £2

Senior Citizen £2

Proceeds to St James Church.

COMPOST. Gardeners used to get compost, £1/bag, at the A1 junction, compost can now be got free at the Alconbury Waste Transfer Station, but take your own bag and shovel. (The WTA is the large building near to the recycling site). If you are interested in re-cycling there will be an Open Day at the Waterbeach centre on 13th July.

Details at ameycespa.com



SPALDWICK SCHOOL Pupils win Red Tractor Competition

Red Tractor are delighted to announce the winners of their 'Me and Red Tractor' competition that launched throughout Red Tractor Week 2012. Molly Ritchie, Finlay Evans and Callum Gibson all from Spaldwick Primary school, Cambridgeshire won a visit to the Red Tractor Assured Whirlow Hall Farm.

The purpose of the 'Me and Red Tractor' competition was to inspire children to consider the origins of the food they consume. With so many fantastic entries it was a tough call, however, the winning entry was eventually chosen as it best exhibited Red Tractor's core message of promoting quality assured food. Judges were very impressed by the level of creativity shown by the pupils who created Red Tractor themed hand-puppets.

Winners and their peers from Kingfisher Class were rewarded with a trip to the Red Tractor Assured farm 'Whirlow Hall Farm' on Friday, 22nd March. Whirlow Hall Farm is an education trust that endeavours to develop and educate children's understanding of where their food comes from. During the farm trip pupils were encouraged to build upon their knowledge of Red Tractor principles with Whirlow Hall Farm's 'Where Food Comes from Tour'.

The pupils benefited from spending time with the animals on the fully-functioning working farm, drawing the link between the food they consume and their origins on the farm. This was followed by a lunch at the farm café which uses the farm's produce as much as possible. Lauren Fielding said:

"In light of the recent news agenda, it is imperative to know and educate where possible about where our food comes from! I feel that our time at Whirlow Hall Farm has really taught us all a valuable lesson about food origins."

The visit to Whirlow Hall Farm also included activities such as: den building, fire making and an outdoor cookout.

Red Tractor Assured Food Standards Brand Executive Georgina Park agreed that the visit had been a huge success and added: "It's heart-warming to see that the next generation is taking an active interest to learn about food origins. Kingfisher Class have made a huge effort to understand and engage with the Red Tractor and we're delighted that we were able to demonstrate the meaning of one of our straplines 'From Farm to Fork'".

SCARECROW WEEK 30TH JUNE-6TH JULY



FREE ENTRY

- ◇ Judging will take place on July 6th
- ◇ Bring your Scarecrow to the Fete for display
- ◇ Please register your entry by 30th June
- ◇ Email : socialgroup@spaldwick.com
or tel. 896996 to register.

Spaldwick Queen

We are looking for our next Spaldwick Queen, to follow Olivia Sturdy, who (as her last duty) will open the 2013 Spaldwick Fete on Saturday 13th July.

The Spaldwick Queen gets to wear the special tiara and open the Spaldwick Fete. She also is invited to other events during the year.

How to be Spaldwick's Queen

To enter, you need to be between 9 and 16 years of age.

Please submit a short description about why you want to be Spaldwick's Queen, which should include details about yourself and how you would contribute to the community during your reign.

Email this, with your contact details, to socialgroup@spaldwick.com by Saturday 29th June 2013.
The winner will be announced at the Fete.



SPALDWICK FETE

**Saturday 13th July
11.00am-4.00pm
Spaldwick Primary School**

Great Fun

Great Food

Great Entertainment

A Great Day Out

Hog Roast and Entertainment

6.30 – 11.00

Still Wanted

Books	Amba	3 High St	890565
Cakes	Rosemary	45 High Street	
Tombola Prize	Lisa	3 Ivy Way	896996
Bottles	Norman	58 Stow Rd	891201