

Dates for your diary:

:: **St James Church Pet Service** - Sunday 9th June, 4.30pm. Other services are on June 2nd & 16th, both at 9.30am

:: **Parish Council Meeting** - Thursday 20th June, Community Room, Spaldwick Primary School, 8pm.

:: **Spaldwick Bunting Week** - Starts June 28th

:: **Spaldwick Summer Fete, Evening Party & Hog Roast** - Saturday 6th July.

June 2019

To advertise or contribute news: Chris Hubbard - spaldwicknews@gmail.com



SPALDWICK NEWS



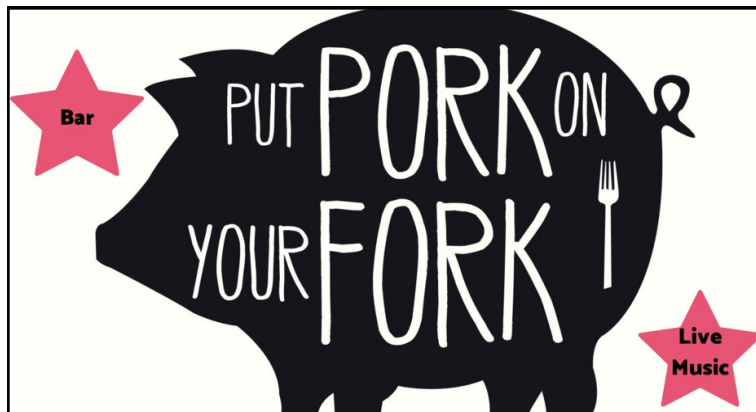
SAVE THE DATE

SPALDWICK FETE

SATURDAY 6 JULY 2019

11am - 4pm

Spaldwick School, 26 Ferriman
Road, Spaldwick PE28 0TQ



**Come & join us for the 2019
Annual Spaldwick Hog Roast**
Sat 6 July 7.30pm until 10.30pm
At Spaldwick Community Primary School

Tickets now available from www.ticketsource.co.uk/ssg

Exploring Manor Farm in 3D

This incredible 3D image of Manor Farm on Spaldwick High Street has been created to show the extent of the work being undertaken by Richard Johnson Restorations.

It has been put together by Mark Allthorpe at 'Propertyviewwrltd', a new venture that creates detailed virtual reality tours for almost any space.

Inside this month's edition, we explore just how far the project has progressed since 2014, and how you can play a part in shaping its future.



Courtyard Kitchen

Why not try our new delicious
freshly made packaged sandwiches
at Budgens, Kimbolton



For all other catering needs,
please contact us to see
how we can help

Cromwell Court, High Street,
Kimbolton, PE28 0HA
07985 580395

kimboltoncourtyardkitchen@gmail.com



Est. 1999



Xygen-I.T.

oxygen-it.co.uk

Local, Reliable, Approachable & Honest.

On - Site Computer Engineer

Open 7 Days inc. Evenings

Low cost fixed price repairs and more.

No fix - No fee.

No Call - out charge.

AND you only pay when you are happy.

01480 390 395

07977 420 288

Tony Aldous
- Owner

20% discount voucher

Present this voucher for a 20% discount off labour charge. 1 voucher per person. Full advert must be presented at time of visit. Discount applies to 1st hour of labour.

the WI

INSPIRING WOMEN

If you are new to Spaldwick and/or are looking to meet new friends and have an interesting and social evening, why not come to an Ellington WI meeting?

Ellington WI holds a mixture of demonstrations, outings, meals, hands-on activities, or talks on fascinating subjects.

Here are some upcoming events:

04 Jun - '80 days around the world'. An evening where members each talk for a few minutes on their favourite or most exciting holiday and bring along photos and souvenirs.

02 Jul - A visit to Buckden Brewery, followed by supper at The Lion

06 Aug - A tea and prosecco party to celebrate our 80th anniversary (18.00 start.)

For more information please contact: Ann Bentley, President (nigelbentley@btinternet.com) or Sue Rice, Secretary (normanrice@btinternet.com). All meetings take place in the village hall and start at 19.30. New members from Spaldwick are welcome!

armedforcesday.org.uk

LIVE ON



ARMED FORCES DAY
SHOW YOUR SUPPORT

ARMED FORCES DAY

**SERVICE OF THANKS AND
COMMEMORATION**

**SATURDAY, 29TH JUNE
2019,
AT 11 0'CLOCK**

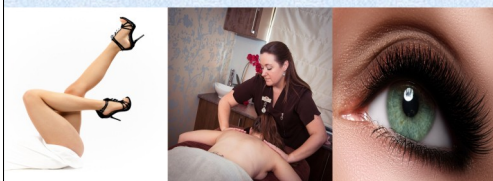
**ST. ANDREW'S CHURCH,
KIMBOLTON**

Followed by light refreshments in the
Mandeville Hall

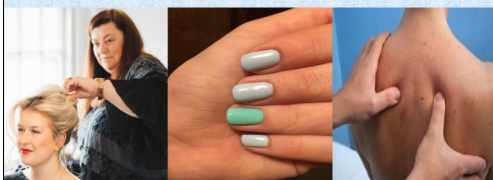
All very welcome

Wellbeing at Holistic Hands

HAIR | BEAUTY | HOLISTIC | OSTEOPATHY



Subscribe to our newsletter for news & special offers
www.holistic-hands-online.com



Holistic Hands Wellbeing Centre
Blackwell Farm Estate, Tilbrook, PE28 0JQ
tel: 01480 869404

St James Church News, by Spaldwick PCC

The animals went into the Church two-by-two

Why not bring your well behaved pet to St James Church on **Sunday 9 June at 4.30pm** for our pet service?

We will have a messy church session based on animals, read about Noah and there will be a craft activity. Come and meet Barney the African Tortoise and Mutley the Australian terrier. Refreshments will be served to all. We look forward to meeting families, animal lovers, supporters and our animal friends.

Our other services are:

- **June 2nd, 9.30am** - Morning Worship, Jill Dighton
- **June 16th, 9.30am** - Parish Communion, Revd R.Lancaster
- **July 7th, 9.30am** - Morning Worship, Jill Dighton

Help keep your church open for the cost of a cuppa

Thanks to everyone who has supported our fundraising so far this year, but as you can appreciate it is a very expensive building to keep open, and we only have a few regular donations. We are busy with our plans to improve the church to help ensure its long term viability for not only community activities, but so that it is there for its more traditional uses such as christenings, weddings and funerals. We are very keen for people to help support us by supporting our new regular giving scheme.

You can donate from as little as the cost of a Costa cuppa, but by doing so you are basically helping to keep the church open. This scheme is run across the country, and administered locally by Ely but all the funds come back to Spaldwick. If you are interested in donating, even just a couple of pounds a month, please get in touch for an information pack by emailing stjamespaldwick@aol.com or calling Amba on 890565 or Julia on 890203. The good news is that all this information is treated as confidential, with just a group monthly payment coming through to the church. **If you decide to remain anonymous only the amount of the gift will be shared with the church - not your name, although if you wish to remain known to us we can thank you.**

If you already have a parish giving pack but haven't had chance to return it, you are not alone – please don't forget to do so as soon as possible – every little really does help!

How buying home insurance could benefit you and the church

Ecclesiastical now offer home insurance and have been awarded the 1st place gold ribbon for Fairer Finance's recent customer experience ratings. Their home insurance is tailored to meet specific needs and are a trusted brand. If you quote "Trust130" you will be asked which church you wish to support and St James will receive a donation. Find out more at: www.ecclesiastical.com/homeinsurance or call 0800 783 0130"

Locking the church - Sadly the church has had to be locked again but if you would like access please knock on one of the doors locally: 3 Stow Road, 2 High Street and Threeways High Street (next door to no 2), or get in touch in advance using the details below and we will be very happy to lend you a key.

To get in touch: stjamespaldwick@aol.com or call Amba on 890565 or Julia on 890203.

The Paddocks Hat Boutique



Beautiful designer hats and fascinators for hire
for all occasions.

The Paddocks
Moor Road
Great Staughton
St Neots
PE19 5BJ

For an appointment please call
07725823322
www.thepaddockshats.co.uk



SPALDWICK BAKE OFF @ THE FETE

*Have you got what it
takes to win?*

Enter any of the three categories for
the below age groups:

- primary age
- secondary school
- 18 years & over

3 categories to choose from:

1. Cupcakes
2. Cakes
3. Savoury bites

On 6th July deliver to judging
tent by 11am for judging at
1pm

CASH PRIZES!



Ducklings at Ivy House, photograph by Shayne Parfrey

The old
swimming
pool at Ivy
House on
High Street
has some
12 new
additions.
Last used
as a pool
around 30
years ago,
the ducks
have now
taken up
residence!



Robinsons Budgens

of Kimbolton

Mon-Sat 6:30am-10pm

Sun 7:30am-9pm

Thrapston Rd, Kimbolton

01480 860582

**Fantastic fresh fruit & veg. Plus bakery,
meats, groceries, household, papers, wines,
beers, spirits, local produce and much more**



Spaldwick

Bunting week!

June 28th

**With the popular Scarecrow competition
returning next year-this year we are
encouraging as many households as possible
to decorate their properties with bunting in the
week leading up to the fete.**

**Make your own or simply buy
some from SSG for £2.50**

Socialgroup@spaldwick.com

SPALDWICK
BEAUTY SPOT

Spaldwick Beauty Spot
12A High Street
Spaldwick
PE28 0TD

spaldwickbeautyspot@gmail.com
07710 033963

- Individual Eyelash Extensions
- Jessica Geleration & Shellac Gel Nails
- Make Up (Special Occasions & Weddings)
- Dermalologica Facials
- Massage
- Spray Tanning
- Hair Extensions Micro & Nano Rings
- Hair Style (Curl Or Straighten)

Stuart's Normandy Beach Trek needs your support

After recent visits to the Western Front and Gallipoli, Ivy Way resident Stuart Ainsworth is again taking to the battlefields and trekking 100 kilometres along the Normandy Beaches in September, to raise money for the Royal British Legion.

The Legion supports the military family serving, veterans and dependants.

Retired Military Logistician Stuart writes: "Last year, in a party of 63 trekkers, we raised over £110,000 so the bar has been set quite high. If you are able to support me this year, all donations and sponsorships will be much appreciated.

"In particular, as this is a battle with which I have no personal connection, and the local area memorials have no immediate connection, please let me know (if you have any family ties) and I will be honoured to pay respects, as we visit many of the military cemeteries in the area."

:: Stuart's JustGiving page can be found at: www.justgiving.com/fundraising/stuart-ainsworth1

Manor Farm House: An Open Letter to Villagers and Friends

Dear Villagers and Friends,

We would like to invite you to walk through Manor Farm and experience this wonderful Tudor building and its perfectly preserved, renovated and repaired ancient oak beams..

We believe Manor Farm is very important to Spaldwick, it's history can now accurately be dated back to 1547 (The year of Henry VIII death and coronation of Edward VI). History tells us the early part was possibly built by the Crown, and the uncovered chamfered lambs tongue beams and joists date to the same period. The restoration has allowed a brief window in which we can share her history and invite members of the village, their friends and family to join us and capture her majestic Ancient Timber Frame in person.

If you would like to join us for a walk through Manor Farm, please do get in touch to organise a mutually convenient time whilst the works allow. The building currently isn't suitable for children, and we do need to ask that groups are a maximum of around 6 in number .

Please email me at jjmanorfarm@icloud.com, or text/telephone 07815 287259 for more information and to arrange a suitable time to visit.

Best wishes and I look forward to meeting you.

Janine Johnson



Bernie's Aesthetics

Registered Nurse BSc (Hons), Non-medical prescriber

"I strive in offering my clients the most informative consultations, discussing a treatment plan, focusing on the areas of most concern."

For further information, contact Bernie on 07724 023602 or email: berni1975@outlook.com



- :: NMC Registered
- :: Member of Royal College of Nursing
- :: Fully Insured
- :: Derma Medical Advanced Training in London



Gymnastics, Trampoline & Dance Club in Huntingdon

www.amysacro.com

Introducing our **NEW** combined class 'Synergy' for training in trampoline, gymnastics and dance for children 7-18 years. Classes structured by age and ability.



Sundays 9-12pm
Hinchingbrooke School
PE29 3BN



To book your **FREE** 1hr taster session complete the online booking form: www.amysacro.com/synergy

follow us:

Amy's Acro Ltd
SynergyHBK



Blueblancmange

Fashion, Accessories, Jewellery & Gifts

Blueblancmange look forward to welcoming you to their new store:

Cromwell House
36 High Street
Kimbolton
PE28 0HA

www.blueblancmange.co.uk
sales@blueblancmange.co.uk
01234 781945

blue
blancmange

Opening Hours:
Mon – Fri 9.30 am – 5 pm
Sat 10 am – 4.30 pm



LEARN TO SWIM WITH LITTLEAQUA

Revolutionary way of teaching
Fun, exciting and safe environment
Private and semi private lessons
Parent and child lessons
Pre-school Lessons
Disability swimming available

Phone: 07889435044 /
07786 278716 / 01480 716231

Manor Farm Restoration, by Chris Hubbard

Restoring a Grade II property, listed on the 'at risk' register was never going to be a straightforward task; and if you speak to Richard or Janine Johnson you will realise just how much of their lives have been affected by the ambitious project to breath new life into Manor Farm on Spaldwick High Street.

Richard, who has a wealth of experience in restorations with his company, has made incredible progress in transforming the crumbling main building and barns - which date in part from the 1540s - to something that future generations will be able to appreciate.

In May, villagers were invited to join Janine Johnson on a tour of the impressive timber framed house in its current condition.

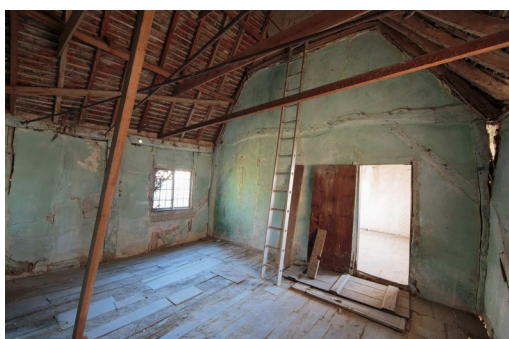
They heard how ageing wattle and daub walling is still presenting significant challenges, and how some of the oak beams and supports (pictured right) will have to be plastered over in accordance with the current wishes of Huntingdonshire District Council.

The Johnsons are very happy for locals to view the house and hear about the progress being made, by appointment, as they feel it is an integral part of the High Street's character and belongs to 'the village.'

:: You can follow the project on Facebook by searching for 'Manor Farm.'

Before Richard Johnson Restorations took the project on in 2014, Manor Farm had stood empty since 2005 when the last occupant passed away.

Back in 2014, Mark Heath of Spaldwick.com was given special access to the house to capture photographs of the building as it stood then. Pictured below is what he discovered:



Spaldwick Parish Council, from Chairman Steve Fane de Salis

Our Clerk, Sarah Cardwell, is expecting her second child and will start her maternity leave at the beginning of June 2019.

We would greatly appreciate help from anyone who would be able to attend a monthly meeting to take and prepare minutes and to assist with office administration duties.

The meetings are held from 8pm on the third Thursday each month, except August when there is no meeting. The administration duties could include preparing Agendas and record keeping, with assistance from the Parish Council Chairman.

If anyone is able to offer any help please email clerkspaldwick.pc@gmail.com or ring Steve on 07736 444765.

April's meeting of Spaldwick Parish Council was held on Thursday 18th. The Chairman is Steve Fane de Salis. Also present were: M Robinson (Vice Chairman), G Smith, I Harriman and R Johnson. No members of the public attended.

Here are some of the points discussed, based on the draft minutes:

- **Dog Fouling** - Villagers are again reminded of their responsibilities regarding clearing up after their dog.
- **Trees bordering on Long Lane** - Trees along Long Lane have been cut back and the cuttings left along the track. The trees are adjacent to the rear gardens of houses in Burton Way. The Parish Council would like to remind people not to cut trees on Long Lane (this is County Council property), as cutting outside of their boundary is not permitted.
- **Playtimes** - A grant request has been made by Playtimes, as they are in the process of raising money for improvements. The decision on this item was deferred until the next Council meeting when more Councillors would be present to discuss.
- **Monthly Ferriman Road Play Area's Inspection** - No action would be taken until a painting schedule is prepared. There was also discussion regarding hedges around the open space and play area, and re missing nuts on equipment. Following a site visit, Cllr R Johnson to speak to Cllr S Fane de Salis regarding replacement in accordance with required standards.
- **Community Room kitchen re-fit** - A total of £1471, including delivery. Approval was proposed by Cllr G Smith, seconded by Cllr R. Johnson, and the motion was carried.
- **New Street Lighting Attachments policy** - From 1st April, to attach any item to a County Council street light (such as a hanging basket, festive lighting, advertising banners, CCTV cameras or public transport information, etc), authorities would need to apply for an 'attachment licence' online

:: Full minutes from Spaldwick Parish Council meetings can be viewed online at www.spaldwickparishcouncil.org.uk

:: The next Parish Council meeting will be held on Thursday 20th June, 8pm in the Community Room. All are welcome.



Huntingdon Parkrun - Saturdays 9am, by Stuart & Alison Ainsworth

For those of you who do not think yourself as being a 'runner', don't be put off by the name of parkrun. Yes, technically it is a free, weekly event at which on average 243 people gather outside the café at Hinchingsbrooke Country Park at 9am every Saturday morning to 'run' 2 laps of the park, covering a distance of 5 kilometres.

However, as I'm sure many of our regulars will agree, what keeps people coming back week after week is not just the activity (although we do have a bell for celebrating personal bests), but the socialising. It's the sense of community and friendships that parkrun has created which bring people together and keep them coming back for more, and there's nothing like a cup and tea and a bacon sandwich whilst exchanging tales of woe and glory in the café afterwards.

Traditional 'racing snakes' are few and far between at parkrun – it's fair to say that most of us do not look, or run, like the athletes we watch on the telly. More commonly we see families – parents struggling to keep up with their sprightly under 11s, friends out having a Saturday morning natter and people using it as an opportunity to give the dog a decent run. We have boys and girls under 11 (who must be accompanied by an adult at all times), right up to men and women in their 80s taking part every week. We also love to have a bit of fun, and have with themed fancy dress runs throughout the year. If you are unsure whether it is for you, why not come down on Saturday morning to see for yourself?

If you don't want to take part, you could also volunteer. All parkruns are entirely reliant on people from the local community who help out every week to make sure that the event goes smoothly and safely. From marshalling, to barcode scanning and timekeeping, there are plenty of ways to get involved and be part of this shared community experience. We also have opportunities for those completing a Duke of Edinburgh Award to join us.

Whether you want to get involved by running or volunteering, taking part is simple, everyone is welcome and you don't need to be part of a running club. Anyone 4 years old or over can register for free at: <http://www.parkrun.org.uk/register/form/>. It only takes a couple of minutes to complete, and you will be given a personal barcode. This is a unique identification number which you must print out (there are options for wristbands or tags that you can attach to your shoe) and bring it along to the event with you. As every event is timed and the results are displayed online, it means you can track your progress. If you are feeling adventurous, then your barcode works at every parkrun anywhere in the world. You don't need to let us know that you're coming, but if it's your first time then arrive by 08.30 and you will be talked through a new runners briefing to explain in more detail how the event works.

Hinchingsbrooke Country Park has a small 'pay and display' car park but there is also free car parking available at the hospital during the event for those displaying a parkrun barcode in their cars. However, we do encourage those who live locally to walk, cycle or car share. We have first timers joining us every week, so you won't be the only one and you will be made to feel very welcome and make new friends within our parkrun family. Huntingdon parkrun would like to thank Hinchingsbrooke Country Park for their ongoing support and the Friends of Hinchingsbrooke Country Park for their efforts in raising funds for the park. We would also like to thank Hinchingsbrooke Hospital for letting us use their car park and all our fantastic volunteers.

:: For more information, visit www.parkrun.org.uk/huntingdon or contact huntingdon@parkrun.com



Spaldwick and Kimbolton Welcome Club are organising a trip to Kew Gardens.

We have sold 41 tickets but, due to an increase in the coach size, we can now offer a further 12 tickets to anyone who would like to join us. Strictly first come, first served.

The cost is £36 per person which includes the coach, entrance to the Gardens and a ticket for the Kew Explorer which is a land train that goes round the gardens. Ticket holders can get on and off at any of the 7 stops throughout the day.

If you would like to join us for this trip, please contact Jean Haines on 01480 891683, so that we can reserve you a place. Payment arrangements must be made at the time of booking.

Pick-up points will be in Kimbolton, Stow Longa, Spaldwick and Gt. Staughton.



- ECO 2022 & Defra Approved Stoves
- Gas & Electric Stoves
- Chimney Lining
- Twin Wall Flue Systems
- Fireplace Renovations
- Fireside Accessories
- Trade Supply



Unit 2 Home Farm Court, The Street, Diddington, St Neots, PE19 5XT



Info@cromwellstoves.co.uk - 01480 812281
www.cromwellstoves.co.uk



KITCHEN CULTURE

We believe the kitchen is the most important room in your home, and should reflect the way you live. Your room should be designed around your lifestyle – this determines your own Kitchen Culture.

Kitchen Culture (Cambridgeshire) Ltd
GSN Buildings, Pertenhall Road, Great Staughton,
Cambridgeshire PE19 5BE

info@kitchenculturecambridgeshire.co.uk
www.kitchenculturecambridgeshire.co.uk
01480 861822

**VISIT OUR
SHOWROOM TODAY!**



Spaldwick Waste Bin Collections for June/July 2019:

Grey		Tues 11th June	Tues 25th June
Blue	Tues 4th June	Tues 18th June	Tues 2nd July
Green	Thurs 6th June	Thurs 20th June	Thurs 4th July

A complete list of materials that can be recycled can be found at:
www.huntingdonshire.gov.uk/whatgoesinwhichbin

The Highwayman Car Scheme - Do you know what it is?

This is a scheme to help provide transport for people in Spaldwick and the surrounding area, who are not able to make essential journeys by public transport or any other means.

A team of volunteer drivers take you to appointments at the Doctors, Hospital, Dentist, etc; alongside social drives such as visiting relatives or friends and even shopping. The scheme is aimed at helping people get out and about. Passengers pay the driver on the day of travel to contribute towards fuel expenses. This is at a rate of 30p per mile with a minimum charge of £3.00

To arrange a journey or for more information please call: **07786 520540**

If the phone is not manned at the time of your call, please leave a message on the answerphone and the coordinator of the drivers will get back to you.

We are also always looking out for volunteer drivers so if you want to help your community give us a call. We would love to hear from you. The scheme is supported and advised by Cambridgeshire County Council and Care Network Cambridgeshire.



We have club nights on 7th and 21st June. As long as we get enough interest, we are going bowling - details below:

LET'S GO BOWLING!!!

We are planning a bowling evening at One Leisure St Ives on Friday 14th June 7-9pm.

We will meet at St Ives to enjoy 2 games of bowling and food over the 2 hours. All this for only £8, as Escape is paying a further £5 per member from the Hinchbrook Foundation grant.

We need to know numbers for this ASAP, so if you are interested please send a message via Facebook and we will respond with a form for you to return to the next Friday Club Session, or to 7 Burton Way, Spaldwick, along with the payment.

PLEASE NOTE: WE ARE NOT PROVIDING A COACH FOR THIS ALL MEMBERS WILL NEED TO BE TAKEN TO ST IVES AND COLLECTED AT THE END OF THE SESSION.



Mikaela Titheridge
 INDEPENDENT STAMPIN' UP! DEMONSTRATOR
www.thecraftyoinkpen.co.uk
 Tel: 01480 896885

- Monthly Craft Classes
- All Day Events / Retreats
- Classes in Spaldwick Village, Dunelm Mill Huntingdon, Kettering Park Hotel & Spa and Tilbrook Village Hall
- Friendly, experienced Top UK Demonstrator local to you.
- All Inclusive Kits
- Online Ordering 24/7
- All Inclusive Kits
- Ongoing 20% discount with a Starter Kit
- Available for Private parties and events.



travel counsellors



Mary Adams, Travel Counsellor

Your personal Travel Expert

01832 731271 or 07709 293178

mary.adams@travelcounsellors.com

www.travelcounsellors.com/mary.adams

With us...it's personal



Pilot
 HEATING & PLUMBING
 SOLUTIONS LTD



- Local
- Reliable
- Responsive
- Professional

Email: enquiries@pilotsolutions.co.uk

Tel: **07912 580588**

Spick & Span

**Reach and Wash
 Window Cleaning**

Regular & reliable friendly window cleaner, able to reach windows above conservatories and three storey townhouses. Windows inside and out.

www.spickandspanwindows.co.uk
info@spickandspanwindows.co.uk

Tel: **07342 846586**

We are hugely grateful to all sponsors for making the printing of this month's newsletter possible - please mention 'Spaldwick News' when replying to their adverts! If you would like more information about advertising, please email: spaldwicknews@gmail.com

Whilst every care is taken in the printing of editorial and sponsorships, Spaldwick News accepts no responsibility for any inaccuracies or consequences which may arise from them. Advertisements are not a recommendation of services.